

**INCLUDES
PARTS
CATALOG**



INSIDE: WHY ACCU-STEEL IS THE RIGHT CHOICE

THE ACCU-STEEL PROMISE

Founded in 1995 and incorporated in 2001, Accu-Steel began manufacturing fabric-covered buildings because we recognized a need in the marketplace for highly engineered, high-quality structures backed by unrivaled customer support. With so many companies focused on lower quality and high-volume sales, we firmly believe we made the right decision. The cornerstone of our business has always been a commitment to quality and a commitment to doing what's right for our customers. We encourage potential customers to talk directly to Accu-Steel building owners because we take this commitment seriously. As our business has evolved and competitors have come and gone, this cornerstone has proven instrumental in building long-term partnerships with satisfied customers day after day.

When you partner with Accu-Steel, you're a part of our promise – a promise of high-quality, fabric-covered buildings at the lowest cost of ownership.

– Jason C. Owen, Owner and President



Financial advantages

Based on local tax and building codes, fabric-covered buildings may be considered temporary or relocatable structures. This classification can provide you with significant financial advantages when compared to a traditional metal building. Some of these advantages include:

Why choose fabric-covered buildings?

- Bright interior saves energy costs
- Natural light, superior airflow, and natural ventilation create a drier, healthier environment
- Low-maintenance structure won't rot, rust, shrink, split, swell, fade, or warp; no need to paint
- More consistent environment is cooler in the summer, warmer in the winter, and quieter year-round
- Buildings can be easily relocated once a job is completed while maintaining resale value

Tax savings

- Many fabric-covered building owners benefit from reduced or no property taxes on their building
- You may be able to use accelerated depreciation to lower your overall tax burden on your building

Permitting

- It is often easier and more cost efficient to acquire a temporary building permit versus a permanent structure permit

Contents

ABOUT ACCU-STEEL2

PRODUCT LINES 10

INDUSTRIES

Cattle..... 14

Industrial 17

Agricultural..... 18

Fertilizer 21

Salt, sand, and de-icing.....22

Mining: oil, gas, and aggregate.... 25

Military and aviation26

Recreational 28

Grain and commodity 30

Green solutions32

PARTS AND SERVICE34

WHY CHOOSE ACCU-STEEL?

The innovative design of our fabric-covered buildings will help you maximize land use, improve production, and reduce costs. What's more, our project management and construction expertise will make the process easy for you from start to finish. While each building can be customized to fit your specific application, all our buildings feature the following:

Engineering and certification

- Designed according to the International Building Code's (IBC) highest engineering standard: human occupancy
- Certified by an independent licensed engineer who then provides the engineering seal on our drawings
- Designed to withstand actual wind and snow load conditions
- Always built with the highest engineering standards and material quality, regardless of the building's end purpose or profile
- Built in the USA

Efficiency and comfort

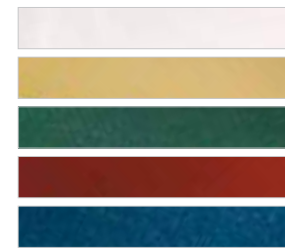
- Abundant natural light, even on cloudy days
- Superior airflow for excellent moisture control and air quality
- Warmer in the winter; cooler in the summer
- Sharp sounds dampened by fabric cover

Versatility and flexibility

- Available in virtually any length and width
- Spacious interior with no supports or beams running through the center
- Easy to relocate, yet as strong and durable as a permanent structure
- Variety of shapes, sizes, styles, and classic colors available
- Lights, conveyors, fans, sprinklers, and anchors optional

Service and 20-year warranty

- Friendly, knowledgeable service reps
- Fast, convenient, quality installation options
- Exceptional service after the sale
- Easy maintenance
- Industry-leading warranty including steel and fabric



Many fabric colors available



BUILT WITH QUALITY FROM THE GROUND UP

Accu-Steel manufactures fully engineered buildings with the best possible materials and components. Construction is quick and easy and can be done one of three ways: our crew can install it, we can recommend a certified Accu-Steel contractor to install it, or you and your crew can install it with help from our site manager.

State-of-the-art polyethylene cover

- Superior light diffusion and UV protection
- Best available fabric in the industry – HL13 (13 oz/yd²) – for exceptional wear resistance
- White, Desert Tan, Barn Red, Forest Green, and Navy Blue color options
- Comprehensive 20-year warranty – longest in the industry

Cover options

- Cost-effective monolithic cover
- Optional Keder cover system; simple and economical sectional cover replacement
- Easy maintenance
- Effortless expansion options

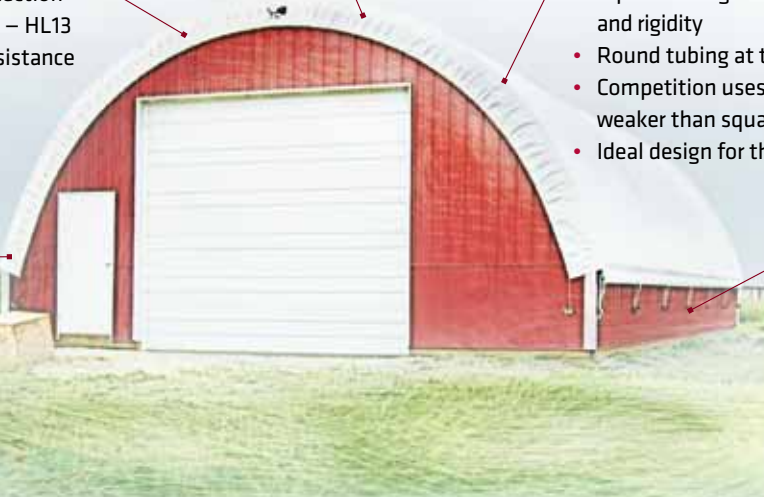
Fire retardant (FR) options

Structural tubing in the truss rafters

- Square tubing at the bottom for superior strength and rigidity
- Round tubing at the top to eliminate fabric friction
- Competition uses all round tubing, which is 35% weaker than square tubing
- Ideal design for the hot-dip galvanizing process

Foundation options

- Pre-cast concrete
- Cast-in-place concrete
- Ground anchors
- Steel “W” beam posts
- Engineered wood posts
- Shipping containers



Superior fabric

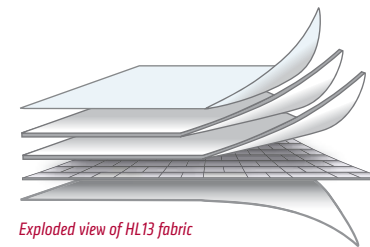
We recommend Fabrene EX-Treme™ HL13 fabric with HYDRA-LOC™ technology for our buildings. HL13 is engineered to be the highest-performing, most durable polyethylene membrane available for any fabric-covered building application.

If there is a need or request to use an alternative fabric, Accu-Steel also stocks 12-ounce and 15-ounce fabrics in both regular and FR material. Our staff has the knowledge and expertise to ensure you are getting the best solution for your specific application – we are your complete fabric-covered building supplier.

- HL13 has the optimum weight-to-strength-to-longevity ratio – too much or too little of any one factor compromises the integrity of the others, making the fabric weaker and potentially costing you in the long run.
- The HL13 coating and lamination process uses lower temperatures, allowing for increased retention of the UV protective properties and greater overall strength. Thicker coating requires higher application temperatures, which compromises UV longevity and fabric strength.



Cross section of HL13 fabric



Exploded view of HL13 fabric

Keder cover system

Our buildings are designed with an optional and economical Keder cover system. The long-term benefits of having sections versus a single-span cover are unparalleled:

- Sections reduce or eliminate maintenance, especially on wide buildings and those with eaves
- If a section is damaged, you won't have to replace the entire cover – just that section, saving you money
- With sections, less energy is transferred throughout the length of the fabric



asicoverbuildings.com/keder

WHAT'S THE DIFFERENCE?

COMPETITORS



IN-LINE OR PRE-GALVANIZING –

The competition completes this process before fabrication, which means the zinc burns when it's welded, leaving pinholes that are susceptible to rust and corrosion. Plus, the completely exposed inside joints allow water vapor and dust to corrode raw steel.

VS.



FABRIC BRACING – Some buildings are designed so the fabric cover itself provides structural support. By relying on fabric tension to strengthen the trusses, the competition is cutting corners and jeopardizing their buildings' structural integrity.

VS.

ACCU-STEEL

HOT-DIP GALVANIZING – Accu-Steel uses this process to completely encase the steel in zinc after it's been fabricated, making it impervious to the elements. In fact, it's the only process that meets stringent ASTM A123 standards for corrosion protection.



STEEL BRACING – Accu-Steel fabric-covered buildings are quality-built with a strong steel bracing system to meet all wind and snow load requirements. The weather-tight fabric cover is just that – a cover – not a structural support element.



ACCU-STEEL OFFERS YOU THE **HIGHEST QUALITY** BUILDINGS AT THE **LOWEST COST** OF OWNERSHIP.

Little details. Big difference.

We proudly manufacture all our products at our facility outside of Templeton, Iowa. That's how we're able to produce the highest quality fabric-covered buildings at the lowest cost of ownership throughout the lifespan of your structure. At Accu-Steel, we work hard to make sure every component is quality-constructed for optimum performance. No cutting corners. No compromises.



Steel tubing – non-flattened ends increase stability



Durable fabric – options that uniquely fit any application



Made in the USA – all components built to the highest standard with the best materials



Dual eaves and ridge vent – provide exceptional 3-way airflow (*Cattle only*)



Steel trusses – hot-dip galvanization offers superior corrosion resistance



Steel beams – primed or hot-dipped galvanized for superior corrosion resistance (*Crossover only*)



Accu-Keder system – individual covers in each bay reduce maintenance (*Cattle, Pro Advantage, Crossover only*)



Truss system – engineered design eliminates cover friction (*Advantage only*)



Green solutions – 100% recyclable buildings designed to help protect the environment



Light-diffusing fabric – deflects heat and UV rays; provides shade without sacrificing natural light

ADVANTAGE AND PRO ADVANTAGE BUILDINGS

The features and options you need for virtually any application.

Accu-Steel Advantage and Pro Advantage buildings are designed with rigorous engineering principles to ensure long-lasting performance. Whether you're storing materials, protecting inventory, or creating a more productive environment, we'll help you make the best choices for your project.

Year-round benefits

- Cool shade in the summer and natural light all year save energy costs
- Excellent free-span space allows for air circulation
- Options include the foundation, walls, lining, and colors

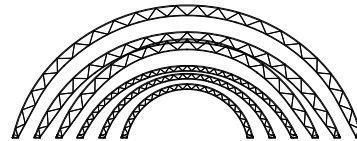
Standard Advantage buildings: 30' to 80' widths

High-profile Advantage buildings: 40' to 60' widths

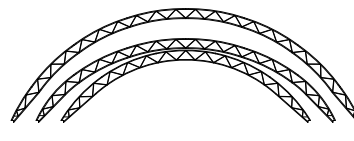
Pro Advantage buildings: 84'+ widths

- Hot-dip galvanized steel to meet ASTM A123 standards
- HL13 fabric with HYDRA-LOC technology
- Individual bay Keder cover system (*Pro Advantage only*)

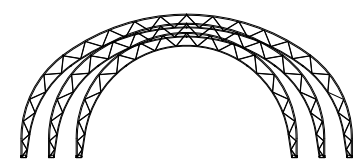
Advantage Standard Profile
30' – 80' wide



Pro Advantage Standard Profile
100' – 140' wide



Advantage High Profile
40' – 60' wide



Pro Advantage High Profile
84' – 124' wide



CROSSOVER BUILDINGS

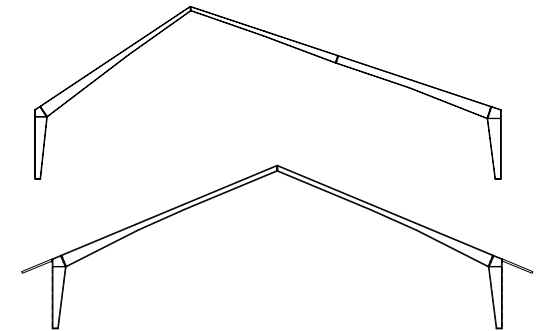
Quality custom solutions to suit your specific needs.

When our customers demanded the strength and versatility of a steel building frame with the benefits of a fabric cover, we delivered. Our Crossover building is a remarkable engineering concept created and developed by the Accu-Steel engineering team to help increase your profit potential.

Flexibility and customization for virtually any application

- Customize your building to the exact size and clearance you need
- Engineer your building to support large doors, conveyors, and sprinklers or to include eave extensions and interior columns
- Maximize livestock performance with 3-way airflow
- Increase storage and enhance equipment mobility with higher side-wall clearances
- Eliminate the need for ratchets and straps with an eave tensioning system
- Install buildings faster than conventional buildings
- Built with an individual bay Keder cover system
- Maintenance is minimal and can be done from the ground; no straps to tighten

Limitless Customizable Crossover Buildings



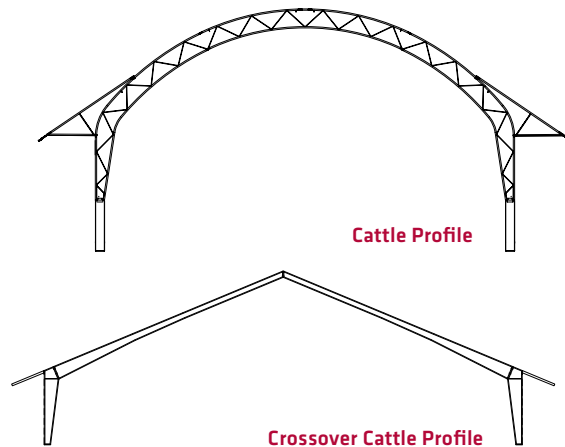
CATTLE BUILDINGS (BEAM POST AND PRE-CAST)

A better environment for your cattle means better returns for you.

Accu-Steel Crossover and Cattle buildings create a dry environment with excellent air quality for feeding cattle. With labor-saving innovations, our buildings increase your daily efficiency and accelerate your time to market, while reducing bedding needs and minimizing weather risks.

Benefits

- Managed environment includes moisture, runoff, and dust control
- Twin eaves manage rainfall and safely allow equipment to pass underneath
- Vent, eaves, curtains, and dual opening doors provide ideal air exchange
- 46' or 60' width options help manage head density and bunk space
- Fully engineered structures
- Ridge ventilation and dual eaves evacuate moisture without creating a wind chill
- Eaves direct water away from building, bedding, and cattle
- Deep bedding pack can reduce manure challenges and labor costs



PARTNERSHIP

Innovative alternatives for cattle operations

Central Confinement Service, Ltd., has recently celebrated its 30th anniversary, and with that they have expanded their construction offerings to include Accu-Steel fabric-covered buildings. Located in Columbus, Neb., Central Confinement Service focuses on the swine, dairy, and beef industries. It was not until their customers started expressing interest in fabric-covered buildings that the company itself began to look into this state-of-the-art option for confining cattle.

In January 2012, Accu-Steel became the number one choice for Central Confinement Service. "We needed the best-designed fabric-covered cattle building on the market," says Tony Romshek, technical sales representative for Central Confinement Service.

Because Accu-Steel Cattle buildings are high quality and have an extremely durable design – with proper airflow that increases cattle performance – Central Confinement Service did not have a difficult choice when deciding who to partner with.

When designing a beef confinement facility, every producer has different needs and expectations. With years of experience in designing confinement facilities, Accu-Steel works alongside Central Confinement Service to develop a

solution that fits each customer's needs. "Because Accu-Steel offers two different buildings for cattle, it allows for flexibility to meet each customer's need," he says.

Central Confinement Service has welcomed the Accu-Steel partnership, which has been beneficial to both parties. Moreover, Accu-Steel solutions have been important to customers looking for innovative alternatives for their cattle operations in the Midwest.

For the full story, visit our website at asicoverbuildings.com.





CATTLE

Fabric cover with a metal frame.

Cattle require a dry, managed environment with excellent air quality so you can reduce bedding needs, decrease labor requirements, and deliver nutrient-dense dry manure. Accu-Steel Cattle buildings are unique because they were designed specifically for cattle production by engineers who understand the industry.

- Managed environment for less animal stress – cattle stay cool in the summer and dry all year
- Reduced manure management and labor costs with a dry, deep bedding pack
- Flexibility to cover new or existing facilities – install on existing grade to minimize ground work and expense

- Option of I-beams or pre-cast foundations
- Compliant with USDA, NRCS, and EQIP standards
- Twin eaves wide enough to keep bunks dry and tall enough for even the largest equipment to pass under

- Narrow ridge vent for adequate airflow with minimal exposure to rain
- Air management tools include optional end walls with two-way gather doors and optional side curtains
- Maintains air quality even when optional curtain is raised

Each Accu-Steel building size and configuration has specific features to maximize your feeding operation, increase your daily gains, and accelerate your time to market.

We recommend **Cattle (pg. 12)** and **Crossover (pg. 11)** buildings for this industry.

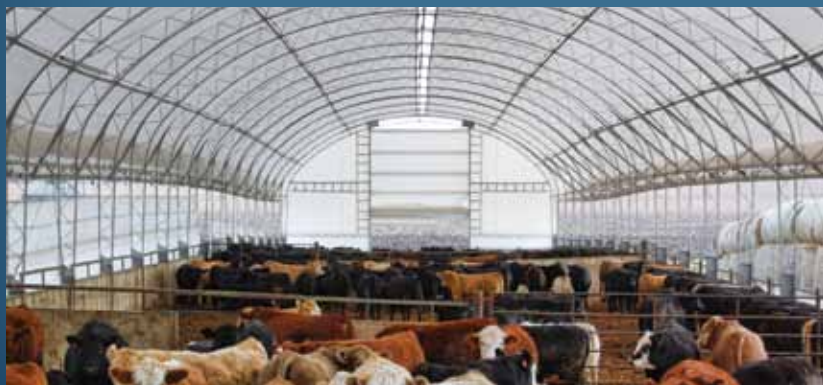


CATTLE

A more predictable business is a more profitable business

When the Iowa DNR (Department of Natural Resources) asked Jerome Kuyper – a third generation cattle farmer – to prevent his cattle runoff from entering a protected creek, he looked to Accu-Steel Cattle buildings. Not only do they have virtually zero runoff, they also possess the features Kuyper was looking for. “I had always wanted a building with all steel and no wooden posts, and Accu-Steel could provide that,” he says.

Accu-Steel products are certified with a pre-engineered code by the NRCS (Natural Resources Conservation Service), so Kuyper was able to meet all DNR requirements without having to pay the roughly \$10,000



in paperwork fees. He now has three Accu-Steel fabric-covered buildings on his property, and no runoff issues.

Also contributing to the low cost of ownership is the fact that Accu-Steel buildings are incredibly low-maintenance. “I never worried about my buildings,” Kuyper says. “My buildings have not been touched since installation, and I’ve never had a fabric tear. There’s no maintenance to it; I’ve never even had to tighten the cover.”

Plus, Kuyper has noticed that cattle housed in the new building gain weight faster, thus decreasing his time to market by about 30 days. “I have a very consistent rate of gain and days on feed, which as a custom feeder makes my business more predictable,” he says.

For the full story, visit our website at asicoverbuildings.com.



INDUSTRIAL

Accu-Steel buildings are an ideal choice for virtually any industrial purpose. Natural light provides a bright, dry atmosphere that's perfect for a storage facility. It also creates a healthier, more productive work environment and reduces energy costs.

- Provide inexpensive cold storage, with the ability to heat
- Install much quicker than traditional buildings
- Support overhead cranes, fire suppression systems, lights, and more
- Relocate to accommodate your business requirements

Quick construction, easy maintenance, and a low cost of ownership make our structures a savvy solution for almost any industrial application.

We recommend **Advantage and Pro Advantage (pg. 10)** and **Crossover (pg. 11)** buildings for this industry.



AGRICULTURAL

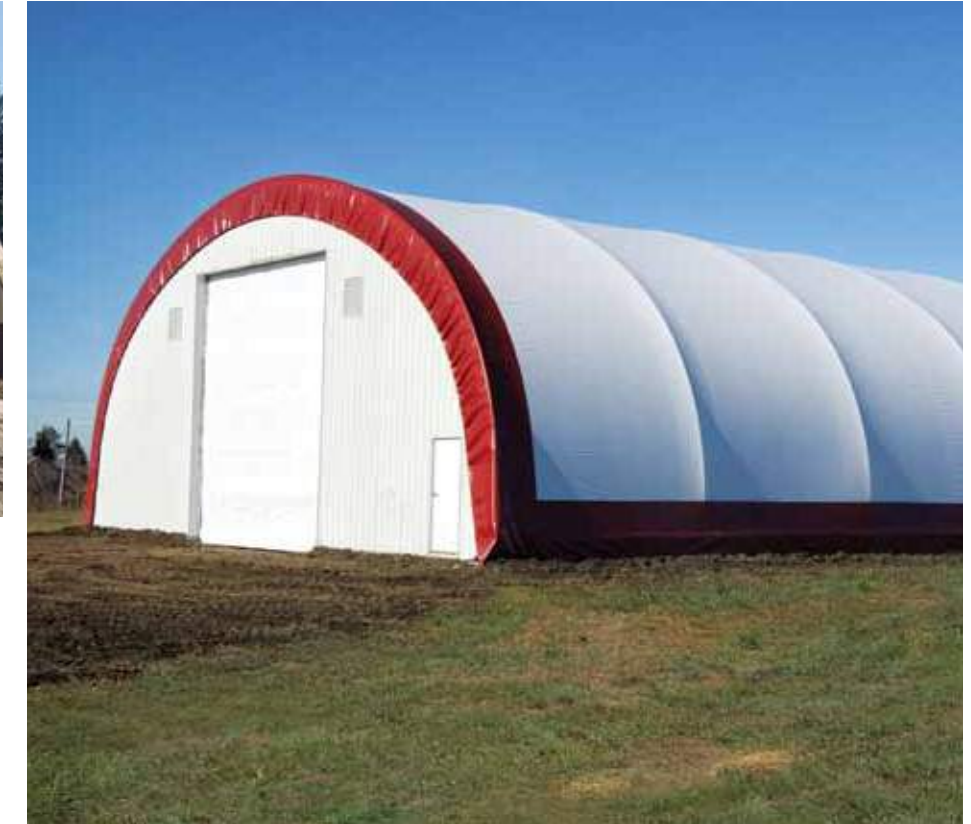
Our sturdy and spacious buildings are engineered by experienced industry professionals to accommodate all your storage needs on the farm – and they can be built in a fraction of the time it takes to build a traditional facility.

- Stack hay and crops without worrying about supports or beams
- Feed and care for your livestock in a lower stress atmosphere with greater air circulation
- Disassemble and reassemble at another location
- Protect your equipment from the elements, reducing maintenance and repair costs
- Use natural light to create a better working environment and minimize energy costs



From livestock to equipment, fertilizer to crops, and feed to bedding, Accu-Steel buildings are a great choice for increased agricultural productivity and profitability.

We recommend **Advantage (pg. 10)** and **Crossover (pg. 11)** buildings for this industry.



AGRICULTURE

Versatile buildings lead to accelerated profits

Customized buildings – that’s what Accu-Steel is all about. Tom Schechinger’s operation fits this mold by using the first Accu-Steel building of its kind. With a lambing operation in Harlan, Iowa, Schechinger knew that a fabric-covered building was the correct choice to help increase annual lambing output.

What makes Schechinger’s lambing building so unique is its 8-foot raised slatted deck. This deck allows for a healthier environment for the sheep, while providing comfortable work days for him. “My buildings offer constant productivity; the animals and myself are not affected by weather extremes,” says Schechinger. For example, during the colder months, he uses the animals’ body heat to warm the building; during the summer, he uses fans – that can create up to a four-mile-per-hour wind.

With the ability to control temperature and light in his lambing building, Schechinger has seen an increase in annual lamb births each year.

Schechinger says he chose Accu-Steel because of, “the light that transmits through the building, climate control, high quality structures, the ease of working with the company, and the fact it’s fully engineered.”

Ever since the installation of his two buildings, Schechinger has been happy with the functionality and durability of his Accu-Steel structures. They have allowed him to better protect and manage his flock, while increasing the health of the flock, and most importantly – increasing the number of lambs marketed each year.

For the full story, visit our website at asicoverbuildings.com.



FERTILIZER

When you choose Accu-Steel, you’re choosing buildings that are a convenient and cost-effective alternative to fertilizer tanks. As an industry leader in fertilizer storage buildings, we provide a solution that’s right for you.

- Hot-dip galvanized to provide exceptional corrosion protection
- Superior strength in the steel structures to support conveyors
- Spacious interior for storing equipment
- Protection against the elements when loading and unloading

Plus, our configurable facilities can be moved from location to location, providing your operation with greater flexibility and profitability.

We recommend **Advantage and Pro Advantage (pg. 10)** and **Crossover (pg. 11)** buildings for this industry.





SALT, SAND, AND DE-ICING

Covering salt and sand is a challenge because of their corrosive nature and demanding environmental requirements. Accu-Steel buildings are the structures of choice for salt, sand, and de-icing materials because they're designed to maximize the life of your stockpile at the lowest total cost of ownership.

- Maintain the salt condition without large lumps or heavy crusting
- Protect groundwater and wetlands from runoff
- Minimize product loss from wetting and leaching
- Ensure employee safety

- Maximize height and square footage for the price
- Resist corrosion in a highly corrosive environment through hot-dip galvanization process

Our buildings also give you the flexibility to load from an attached conveyor system, from a portable conveyor system, or by dumping and pushing. They can also handle significant snow and wind loads, which is vital if you're in an area that requires salt and sand.

We recommend *Advantage and Pro Advantage (pg. 10)* buildings for this industry.



SALT, SAND, AND DE-ICING

High quality and versatility make the difference

As metro Iowa is growing, so is the need for rock salt storage. Bret Hodne, public works director for the City of West Des Moines, noticed that many municipal agencies didn't have the resources to store enough salt to keep roads safe in the winter. Metro Waste Authority offered to let him use a piece of land that was easily accessible to all agencies and large enough to house adequate salt supplies.

After considering the high cost and permanence of steel structures, Hodne began researching fabric-covered buildings. He says, "We chose Accu-Steel because of their reputation, their building specifications, and their hot-dip galvanization process," which offers superior protection against extremely corrosive elements, such as salt.



Hodne explains that superior wind-load ratings were a significant factor in his decision to build Accu-Steel Pro-Advantage buildings, as well as their potential to be relocated should Metro Waste Authority require the land back. Plus, they're aesthetically pleasing and easy to maintain – rather than replacing the entire fabric cover if it gets damaged, individual bay panels can be replaced conveniently and cost-effectively.

Overall, Hodne recognizes that Accu-Steel strives to deliver exceptional products and service. "It was the efficiency and fortitude of Accu-Steel that made the process come together in the end. I'm impressed by their professionalism, and I feel comfortable picking up the phone when I need something from them," he says.

For the full story, visit our website at asicoverbuildings.com.

MINING: OIL, GAS, AND AGGREGATE



Accu-Steel understands the importance of strategic design, structural strength, quality installation, and long-lasting performance. Accu-Steel buildings are built with many beneficial features that make them an excellent choice for mining.

- Flexibility to be reconfigured, relocated, or expanded
- Strength to support overhead cranes, fire suppression systems, ventilation equipment, lighting, and more
- No condensation or dripping to jeopardize quality of frac sand or RAP (recycled asphalt pavement)
- Compatibility with almost any size and any number of doors
- Quick, easy construction on new or existing asphalt or concrete surfaces
- Fiberglass insulation for higher R-values

With versatile offerings and custom capabilities allowing us to meet virtually any building requirement, our mining facilities are sure to be a profitable part of your operation.

We recommend **Advantage and Pro Advantage (pg. 10)** and **Crossover (pg. 11)** buildings for this industry.



MILITARY AND AVIATION

When powerful performance, rugged durability, and intuitive design are important, Accu-Steel buildings won't let you down. The perfect choice for military and aviation applications, they're built to withstand the most challenging environments.

- Change in configuration, location, or size
- Can be installed quickly and easily using basic tools and gear
- Support overhead cranes, fire suppression systems, smoke curtains, ventilation equipment, lighting, and more
- Include fiberglass insulation for higher R-values

Our quality-constructed and cost-effective building solutions are designed to meet strict military and aviation requirements.

We recommend **Advantage and Pro Advantage (pg. 10)** and **Crossover (pg. 11)** buildings for this industry.

MILITARY AND AVIATION

After the storm

Most of us know how destructive tornadoes can be. Glen Arrington, government divisional manager of a joint U.S. military training facility in Fort Leonard Wood, Mo., knows firsthand.

On New Year's Eve 2010, a tornado destroyed two already-erected Accu-Steel buildings, leaving one completely destroyed and the other damaged. After the devastation, the government placed top priority on refurbishing these projects. The ability to restore the destroyed building and build another one according to quality standards made the decision to again work with Accu-Steel worry-free.

The buildings are used while training personnel in the Army, Air Force, Navy, and Marines. "The troops use the buildings to get out of the heat and the rain in summer, and out of the cold in winter. Overall this makes training operations more efficient, as troops can't train when the weather is presenting suboptimal conditions," explains Arrington.

From the time of the devastation of the tornado to working with governmental requirements and the construction of the buildings, Arrington says the process with Accu-Steel was

successful. The effort made by Accu-Steel to work with the government and meet their guidelines was appreciated.

For the full story, visit our website at asicoverbuildings.com.



RECREATIONAL

Accu-Steel moves into the spotlight

Accu-Steel fabric-covered buildings are known in the Midwest for a variety of applications, including cattle and agriculture operations, as well as storage for grain, commodities, salt, sand, equipment and more. Though these buildings are most frequently used within applications such as these, Accu-Steel was proud to announce a new structure erected for a truly unique and exciting purpose.

Built in late May 2012, next to the Monté Carlo Resort and Casino in Las Vegas, is an 800-seat Accu-Steel Crossover building. World-famous dance crew Jabbawockeez performed their celebrated MÜS.I.C show under the fabric-covered pavilion July through September 2012. Fans and Las Vegas tourists who attended the show had the unique experience of an outside venue, offering abundant natural light and cooler temperatures with zero obstructions to the stage.

Accu-Steel completed construction of the pavilion in approximately one week. With world-class support and customer service, Accu-Steel ensured the structure maintained its high-quality characteristics throughout its summer use. This pavilion in Las Vegas is another example

of the versatility and unique application solutions fabric-covered buildings provide.

Jabbawockeez is a seven-member male hip-hop dance crew best known for winning the first season of "America's Best Dance Crew."

For the full story, visit our website at asicoverbuildings.com.



RECREATIONAL

Choose Accu-Steel to create the most effective, flexible, comfortable atmosphere for your recreational complex. Accu-Steel buildings have wide-open interiors with no supports or beams to obstruct the movements of players or the vision of spectators.

- Available in virtually any size
- Color options to complement nearby facilities
- Fabric covers that absorb the noise from the crowd
- Straight sidewalls to accommodate overhead doors and exit doors
- Strength to support fire suppression systems, sprinklers, ventilation, HVAC, lights, viewing platforms, sports nets, and more

And since our structures can be installed quickly and easily, you can start using your new facility sooner.

We recommend ***Advantage and Pro Advantage (pg. 10)*** and ***Crossover (pg. 11)*** buildings for this industry.

GRAIN AND COMMODITY

Selecting the right building to improve quality

Farmers Cooperative Elevator Company (FAC) is the largest member-owned feed mill in Western Iowa. Located in Arcadia, FAC provides many services to the farming community, the largest of which is feed storage.

With technological advancements increasing annual yields, and traditional storage methods jeopardizing feed quality, FAC turned to fabric-covered building solutions. They needed to build a storage facility on an existing concrete foundation in 2002, so they chose an Accu-Steel Pro Advantage building.

Darrell Henkenius, operations manager for FAC, says, "Accu-Steel created a custom design to fit our pad, with a low profile at an affordable cost." Since then, the company has invested in two more Pro Advantage buildings for their operation.

Plus, unlike the steel bins or concrete elevators most feed mills use to store their

grain, Accu-Steel buildings can be used for a variety of applications year-round. "Knowing this building would be more useful to us throughout the year was a big selling point," explains Henkenius. "Once we get the grain out of it, we store motor equipment, lumber, and steel to keep them dry and out of the elements."

Flexible and durable, Accu-Steel products allow FAC to store grain longer without compromising quality. Says Henkenius, "Even in the summer we don't have grain that's getting wet or hot."

For the full story, visit our website at asicoverbuildings.com.



GRAIN AND COMMODITY

Accu-Steel buildings provide excellent inside clearance for grain without the expense of a high-wall foundation. The air space between the grain and the bottom of the cover allows for real air movement in the grain pile, which protects grain quality.

- More options and flexibility when compared to vertical or outside storage
- Increased storage capacity in a controlled environment for reduced overall cost per bushel
- Access to your grain anytime with minimal equipment, labor, and exposure to the elements
- Excellent machinery storage or warehousing for anhydrous ammonia tanks or other equipment

- Economical old-crop storage that allows higher-cost vertical storage to handle the incoming new crop

An Accu-Steel grain facility is a great choice compared to a temporary pile, because it quickly pays for itself in increased labor efficiency, reduced commodity loss, warehousing flexibility, and long life of the structure.

We recommend **Advantage and Pro Advantage (pg. 10)** and **Crossover (pg. 11)** buildings for this industry.



GREEN SOLUTIONS

Accu-Steel buildings are ideal for recycling and waste management facilities. They're built to resist corrosive materials and protect the outside environment from contaminations. Closed-end buildings are also available to help seal in odor.

Our Accu-Steel buildings are a smart choice for green initiatives.

- Natural lighting reduces electricity usage
- Less ground water impact
- Comfortable, healthy, aesthetically pleasing surroundings
- Fabric buildings promote occupant health and improve productivity
- Fabric buildings are made from recyclable materials
- Fabric buildings improve air quality – effective ventilation and air volume

We recommend *Advantage and Pro Advantage (pg. 10)* and *Crossover (pg. 11)* buildings for this industry.

BUILDING REPAIR

Trusted to do the job right the first time

Through a combination of high-quality materials and a dedicated focus to details, Accu-Steel is establishing a reputation of constructing the best fabric-covered buildings supported by exceptional customer service. As an example of the company's success with its customer base, several people are now employing Accu-Steel to perform repairs on competitors' buildings.

Recently, Chris McCormick, a business owner southeast of Des Moines, Iowa,

purchased two non-Accu-Steel buildings. The installation of these buildings, unfortunately, came with quite a bit of difficulty and disappointment. After discovering his relationship with the manufacturer and the company's building standards didn't meet his expectations – and construction was never fully completed – McCormick reached out to a friend to find a reputable company to finish and repair his new buildings.

McCormick received a referral to Accu-Steel and subsequently made a call hoping it would result in completed, functional buildings.

The buildings needed more than just minor repairs; in fact, one of the structures needed to be completely rebuilt. The original timeframe for construction of the buildings was

approximately one year – to his surprise, Accu-Steel rebuilt and repaired the building in less than a week.

McCormick describes his experience of working with Accu-Steel as, "very good – they came and did exactly what they said they were going to do, fixed it, and did it correctly the first time without costing a ridiculous amount."

McCormick realizes more repairs may be needed in the future due to the initial substandard construction methods used by the original manufacturer. Luckily, though, he's now found a trusted partner he can rely on for support.

For the full story, visit our website at asicoverbuildings.com.



PARTS, SERVICE, AND REPLACEMENT COVERS

As your full-service fabric-covered buildings supplier, we can service any building anywhere, even if it's not an Accu-Steel building. We have quality parts and supplies in stock and ready to ship, available for order Monday through Friday from 8 a.m. to 4 p.m. Central time. For the most current pricing, call **877.253.4274** to speak to our friendly and knowledgeable parts and supplies specialists – and we'll get you what you need when and where you need it.

PRODUCT	DESCRIPTION	PRODUCT NUMBER
Replacement covers	With our replacement covers, you can modify or upgrade any fabric-covered building. If you have an old fabric-covered building, we can fix it. You can also add a Keder track system to any current monolithic building.	
Zinc-rich paint – 13 oz. can – 35% zinc	Matches color of hot-dip galvanization. This paint will help you if your building steel was pre-galvanized.	31555000
Aluminum Keder track – 24' sections	Available in flat-bottom, round-bottom, open-top or pound-in top. Pre-punched with 4" centers. Aluminum is type 6062 T6.	91180000
Keder screws	Specifically designed to be used in our pre-punched aluminum Keder track.	27070000
Keder lubricant – 1 gallon	Specifically formulated to assist in pulling Keder through the track and to work well in low temperatures.	911850000
2" single-hole ratchet winch – 11,000 lb.	Both lefts and rights available – please specify on your order. 3/4" hole.	36235000

September 2012

PRODUCT	DESCRIPTION	PRODUCT NUMBER
2" natural color webbing	Matches the exterior of our buildings and is designed to be UV stable.	31540000
1" ratchet with 72" of 1,500 lb. webbing	Replaces the traditional single piece lacing.	31595000
1" black webbing – 1,500 lb.	Designed to be UV stable and corrosion proof. Will work with 1" black lacing.	27450000
1" dual tension lock	Use in place of the 1" ratchet in a highly corrosive environment.	27445000
1/2" x 6" eye – jaw turnbuckle with jam nuts	Hot-dip galvanized corrosion protection.	27145000
12" x 25" adhesive backed patch material	Available in multiple colors and developed with an exclusive Accu-Steel glue adhesive for maximum performance.	
A 325 fasteners	Engineered structural galvanized bolts.	
1/4" 7x19 galvanized cable	High-strength and corrosion-resistant.	27005000
3/8" 7x19 galvanized cable	High-strength and corrosion-resistant.	270150000
3/16" plastic coated cable	Great replacement for the Conestoga seatbelt lacing.	630316000
1/2" poly rope	Specially designed for Accu-Steel Keder track system.	63030901



For a free quote, please visit asicoverbuildings.com or call 877.253.4274 to speak to a friendly and knowledgeable sales specialist.