

Name:		
Location:		
Email:		
Phone:	Cell:	
Fax:	Cover: Enduro-Loc™ KEDER	
Length:	Centers:	Arc:
Rafter Coating: ASTM-A123 Hot Dip Galvanized 3.9 mils Zinc		
Foundation:		

50'-2" CATTLE BUILDING INTEGRITY TRUSS

Notes: H-BUNK DESIGN

PROFILE SUBJECT TO CHANGE

THIS DOCUMENT CONTAINS
INFORMATION PROPRIETARY TO
ACCU-STEEL INC. IT SHALL NOT BE
REPRODUCED, USED, OR DISCLOSED
WITHOUT PRIOR WRITTEN
PERMISSION OF ACCU-STEEL INC.

Date: 02/10/20

Project:

Drawn By: JTK

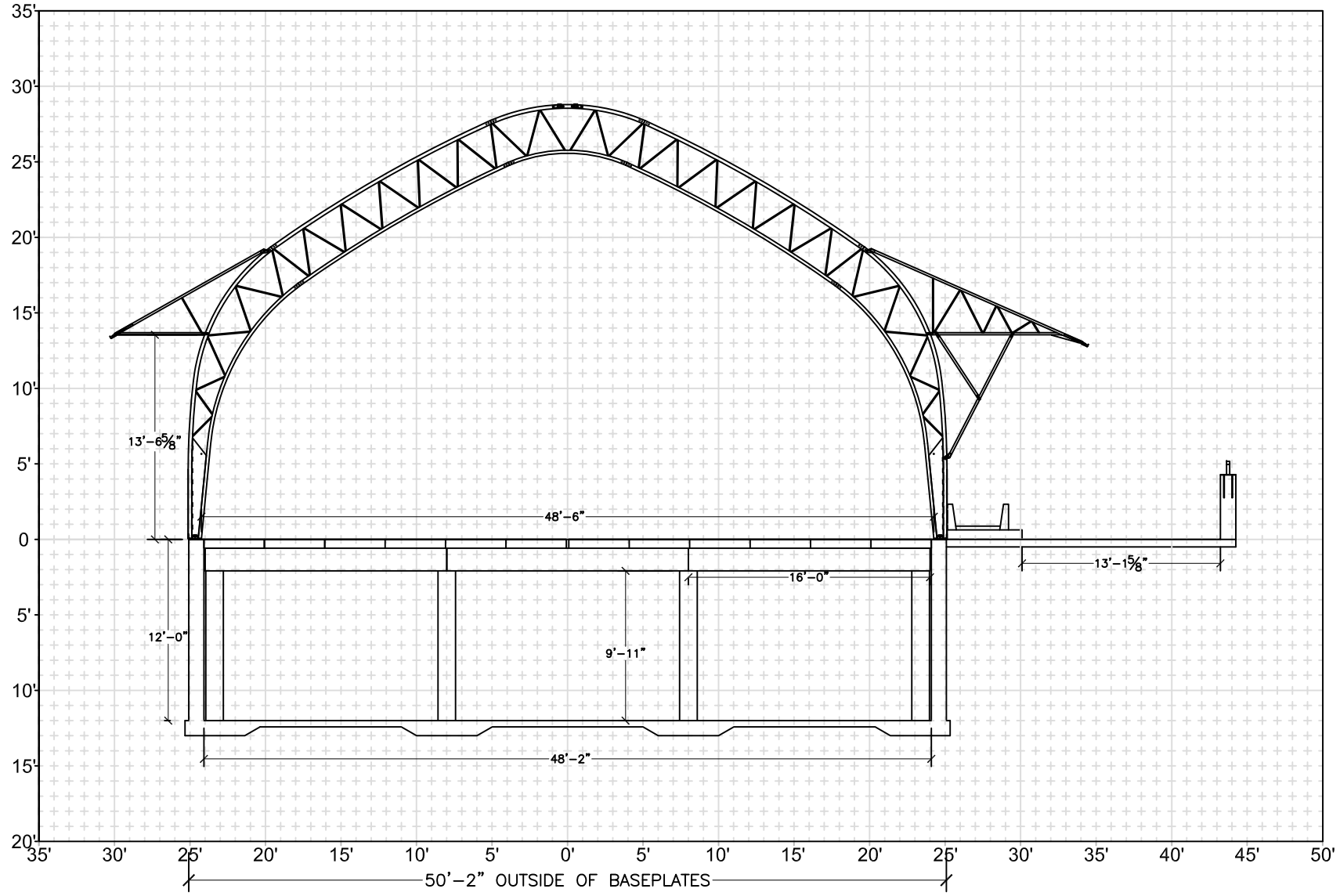
Sales #



1-877-338-6936

www.asicoverbuildings.com

sales@asicoverbuildings.com



1'x1' GRID