

COMFORT

- Dry bedding and decreased exposure to extreme temperatures creates a comfortable environment
- Low weaning stress on calves
- Separate pen layouts for cow/calf pairs
- Ample spaces creates a safer environment for each cow/calf pair
- Excellent ventilation will keep air fresh and aid in preventing respiratory ailments
- No need to relocate the cow/calf pair outside

OPERATIONAL BENEFITS

- Proven increased conception and birth rates in comparison to cattle on pasture
- Increased genetic gains using artificial insemination with increased working space
- Calves go to market 30-45 days sooner on average
- More control of the herd for health and management
- Better observation of cows and calves to determine immediate needs
- More predictable labor time and costs
- Alternative solution to limited pasture ground
- With proper bedding the herd will stay dry and out of the mud allowing the calf to get the nutrients it needs

CUSTOM DIMENSIONS WITHOUT THE CUSTOM COST

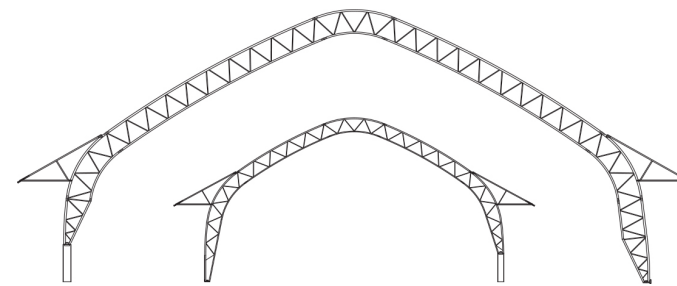
- Hot-dip galvanization after fabrication
- Enduro-Loc™ fabric technology
- USDA/NRCS/EQIP compliant
- 3-way airflow
- Individual bay keder cover system
- Dual eaves
- Exclusive eave tensioning system
- Industry leading, 20-year comprehensive warranty

INNOVATIVE DESIGN

Accu-Steel buildings help you maximize land use, improve production, and reduce costs.

VARIOUS WIDTHS

- Wide eaves protect the bunk from rain and snow
- 12'+ tall eaves allow for large equipment to pass underneath
- 6'+ eaves direct water away from building, bedding, and cattle
- Eaves maintain 3-way airflow, even when the optional curtain is closed
- Dual opening doors can be lowered from the top, allowing for airflow without wind chill
- 11' Premium Eave allows for even more coverage



ACCU-STEEL CATTLE INTEGRITY SERIES

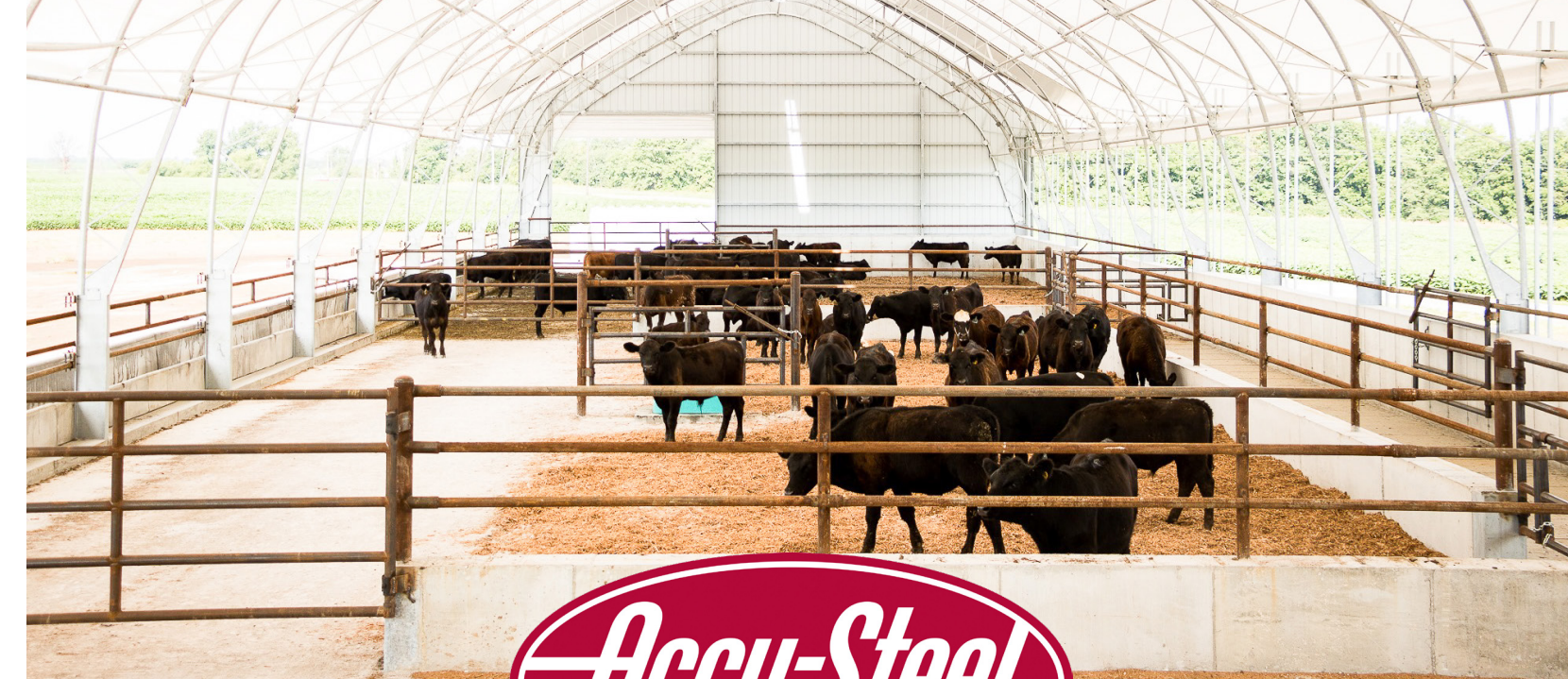
38' and any measurement from 46' to 98' wide, any length

LITTLE DETAILS. BIG DIFFERENCE.

We proudly manufacture our products at our facility outside of Templeton, Iowa. That's how we're able to produce the highest quality fabric-covered buildings at the lowest cost to you. We work hard to make sure every component is quality-constructed for optimum performance. **No cutting corners. No compromises.**



CATTLE BUILDINGS



A BETTER ENVIRONMENT FOR YOUR CATTLE MEANS BETTER RETURNS FOR YOU.

Accu-Steel Cattle buildings create a dry environment with excellent air quality while reducing animal stress and manure management costs. With labor-saving innovations, our buildings increase your daily efficiency and accelerate your time to market, while reducing bedding needs and minimizing weather risks. Whether it's cow/calf, finishing or backgrounding, our in-depth knowledge of putting cattle under roof allows us to provide the right solution to best fit your operation — keeping you as efficient and profitable as possible.



2245 110th Street, Audubon, Iowa 50025
4448 NW Urbandale Drive, Urbandale, Iowa 50322

REDUCE STRESS. INCREASE AIR QUALITY. MINIMIZE RISK. IMPROVE DAILY EFFICIENCY

FOUNDATION OPTIONS

- **Concrete** - Precast blocks, cast-in-place, T-panels, L-panels, or jersey barriers. Create a floor plan that will withstand the wear and tear of the cattle and machinery used in building
- **Deep pit** - Reduce bedding and labor costs while mitigating the risk of environmental impact. Suggested in 38', 50', and 65' with alley, in the Cattle Integrity Series
- **Cover existing foundation and feed apron** - Option to add cover over existing foundation, even on slopes
- **I-beams** - Posts are anchored below the frost level and a concrete wall is constructed along the sides of the frame
- Other foundation options are available upon request
- All structures are engineered from the ground up to comply with local codes and to accommodate each individual cattle operation's needs



NARROW RIDGE VENT

- Vent is designed to work with twin eaves to provide excellent air quality
- Ridge ventilation and dual eaves evacuate moisture without creating a wind chill
- Rain entry is minimized, so bedding stays drier and lasts longer
- Vent, eaves, curtains, and dual opening doors provide ideal air exchange

MANAGED ENVIRONMENT

- Animals stay cleaner, drier, and healthier all year-round, resulting in less stress
- Deep bedding pack reduces manure challenges and labor costs
- Feedlot runoff, dust, and herd health are easier to manage and control

KEDER COVER

- Exclusive eave tensioning system eliminates the need for ratchets, which can rust or fail
- No straps to tighten or wear
- Maintenance is minimal and can be performed from the ground
- Truss and cover connection is the most weather-secure in the industry

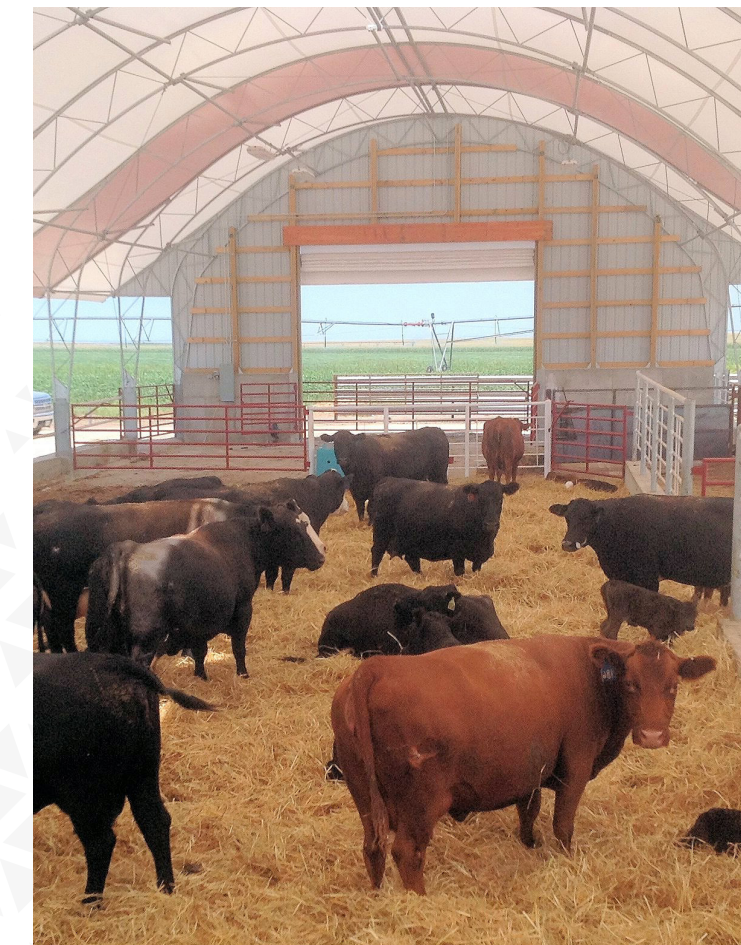


FABRIC OR SHADE CLOTH OPTIONS

Image above shows curtain motor without motor cover.

CUSTOMIZEABLE

- Ability to integrate robotic milkers and other new technology
- Create the floor plan and layout that works the best and most efficiently for your operation
- Add a manure scraper system to alleviate labor expenses
- Allow easy access alleys for feeding, cleaning, and bedding



877.338.6936
www.accusteel.com