

Why Choose Accu-Steel?

In addition to Accu-Steel's stringent standards, there are several unique reasons to choose Accu-Steel

Our Fabric Covers

- All fabric, including Enduro-Loc™, provided by Accu-Steel is manufactured by 9001 ISO certified fabric manufacturers
- Our covers are sleek and pinhole-free made of double layered polyethylene that features a protective, smooth top coat with patented wicking technology to shed water and self clean. It is engineered to perform better and last longer
- Our fabric is flame retardant based on the National Fire Protection Agency (NFPA) 701 standards and testing. We have California fire rating approved fabrics
- Our supply chain partners provide PVC or any spec fabric
- Accu-Steel fabric covers are attached multiple ways to the steel trusses dependant on the structure, use of the building, and profile. Often load rated wrenches are used to strap the cover in place. We use individual ratchets - no continuous lacing and no hand tightening
- Mesh vents can be built into our covers eliminating framing and parts that could corrode

Our Keder System

- The keder cover system is created when extremely durable poly cord is welded into the fabric covers and fed through an aluminum keder track. This creates a continuous connection to the frame forming a weather tight seal between the individual fabric panels
- Accu-Steel's keder track is extruded using our exclusive die
- We offer the keder cover system for a variety of our cover options including sectional, hybrid, and individual bay



Individual Bay Cover Installation



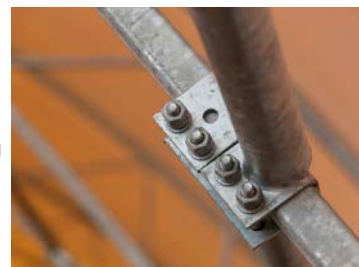
Keder Track Sample

Our Doors

- Accu-Steel provides high-performance fabric doors that meet the most rigorous demands. Our doors are on a continuous door track allowing for no joints and minimal maintenance. Powered doors are also available
- Accu-Steel walk-in doors are fiberglass with an aluminum frame and stainless steel hinges, creating a corrosion resistant door

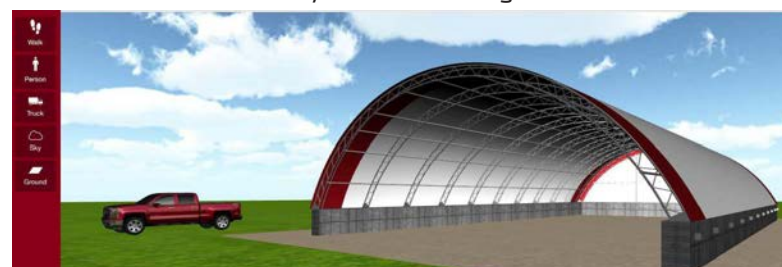
Our Structures

- We use an individual cable system on all structures. The cable used has a 3/8" minimum diameter. We are also able to provide stainless steel cable to prevent corrosion
- All structural connections have ASTM A325 or A307 bolts



Our Services

- We pride ourselves on our excellent customer service. Including our office support staff that is available to address any questions or issues that may arise before, during, and after installation
- Accu-Steel headquarters is home to multiple research and development buildings to test different ideas and solutions
- Our buildings are incredibly versatile. We are able to accommodate various widths to cover existing foundations. We also provide replacement parts for existing structures whether they are an Accu-Steel building or a competitor's
- Accu-Steel's specifications and warranty are available to view on our website along with our NEW 3D Design Software that can be used to create your own building

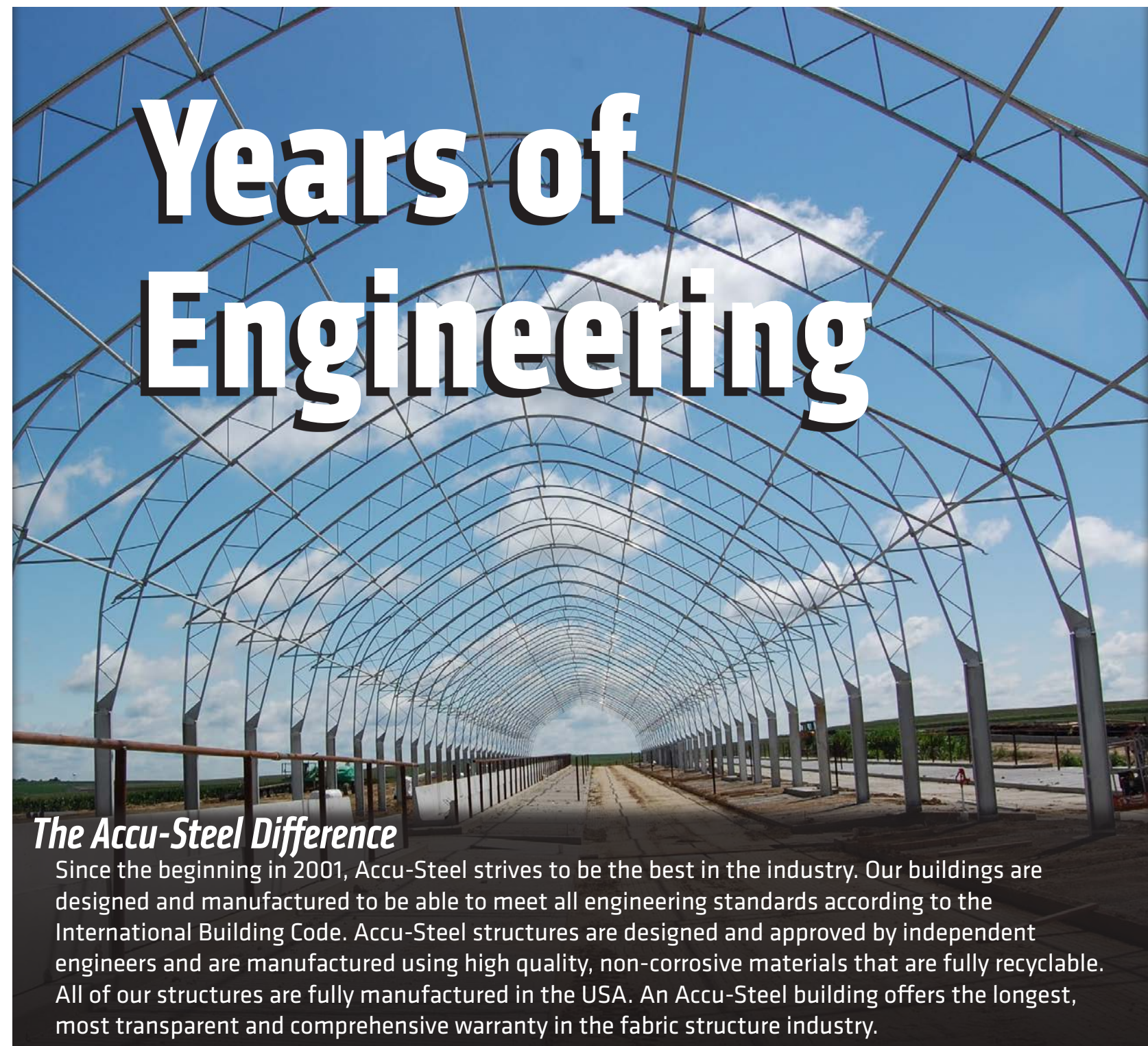


Example of 3D Design Software

NJPA

- Accu-Steel is a NJPA (National Joint Powers Alliance) approved vendor. Working closely with the NJPA satisfies the bid process making it more efficient from proposal to project completion
- NJPA is a public agency that is committed to providing cooperative purchasing solutions that assist Government and Education entities nationally and locally
- As a municipal contracting agency, NJPA provides nationally leveraged and competitively solicited purchasing contracts under the guidance of the Uniform Municipal Contracting Law

"After four years of research the choice was obvious, Accu-Steel" - Chad and Amy Wilkerson, Wilkerson Farms



Years of Engineering

The Accu-Steel Difference

Since the beginning in 2001, Accu-Steel strives to be the best in the industry. Our buildings are designed and manufactured to be able to meet all engineering standards according to the International Building Code. Accu-Steel structures are designed and approved by independent engineers and are manufactured using high quality, non-corrosive materials that are fully recyclable. All of our structures are fully manufactured in the USA. An Accu-Steel building offers the longest, most transparent and comprehensive warranty in the fabric structure industry.



Accu-Steel Standards



Design

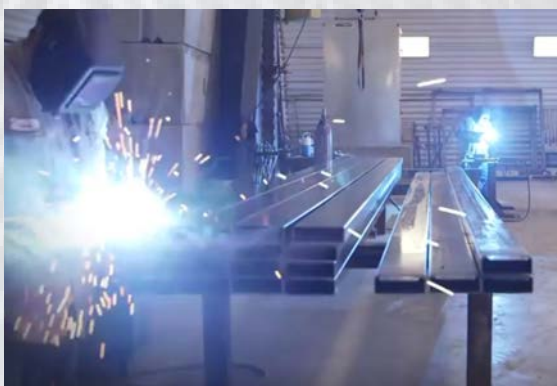
- Our structures are designed with the quality, value, and longevity that is accomplished through our exceptional standards and extensive engineering process
- We utilize standards, specifications, recommendations, findings and/or interpretations of professionally recognized groups
- All Accu-Steel buildings can be engineered to meet the International Building Code (IBC) up to 2015 for current, site specific building codes
- We design to American Society of Civil Engineers (ASCE) building standards

Engineering

- Accu-Steel has in-house draftsmen that review every building that is ordered and draft the project from start to finish
- The project is then certified and approved by an independent engineer
- All buildings can be specifically engineered to withstand the site's conditions including wind, snow load, seismic loads and UV radiation in accordance to the International Building Code (IBC)
- Accu-Steel structures are continuously built with the highest engineering standards and material quality including our hot-dip galvanized steel



Fabrication



- Accu-Steel buildings are fully manufactured in the USA
- All welders meet the American Welding Society Structural Welding Code (AWS)
- Our high strength steel is tested and purchased at specific yields ensuring it is compliant with numerous ASTM (American Society for Testing And Materials) National and International Standards
- Black, untreated steel is hot-dip galvanized post fabrication (after welding and bending) - this completely encases the steel in zinc, creating a shield against the elements and is the only process that meets the stringent ASTM A123 standards for corrosion protection

Corrosion Protection

- Corrosion occurs when the iron in steel is oxidized to produce rust - this is caused by the presence of moisture and oxygen simultaneously. Accu-Steel buildings prevent this with excellent ventilation and a protective zinc coating
- Since 2001, Accu-Steel has taken every necessary step to prevent corrosion on every project and will continue to do so
- We offer a stainless steel upgrade to ensure the cables, nuts, bolts, ratchets, etc. are completely protected in highly corrosive environments
- All steel is bathed in molten zinc to receive a coating on every surface inside and out



Galvanizing Steel in Zinc Bath



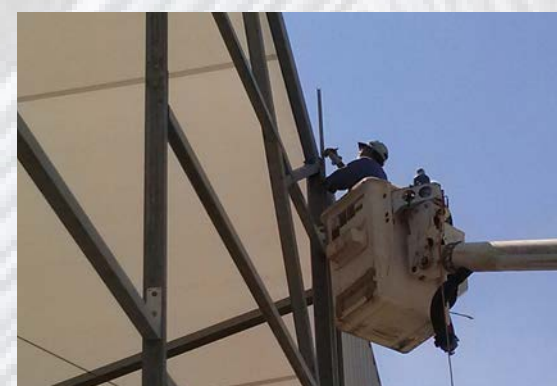
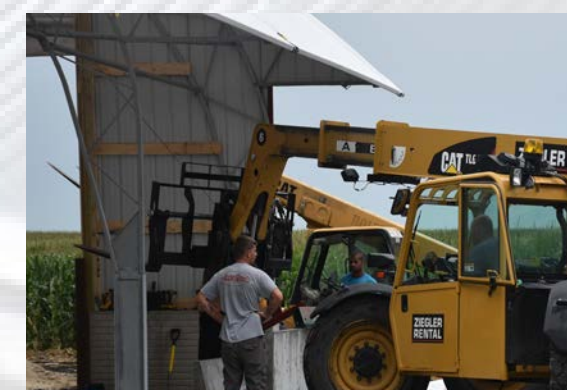
Pre-Galvanized Steel Post Weld



Dealers and Installers

- Accu-Steel has a multitude of certified install crews throughout the world due to our expansive dealer network
- Our knowledgeable dealers receive training to be able to provide optimal customer service and assist in any way
- We provide the tools necessary for our dealers to be successful

“Accu-Steel offers a sound product and great support team for me and my customers. I know when I pick up the phone, somebody I trust will answer.” - Vincent Glassmaker, Accu-Steel Installer



Maintenance Service

- Accu-Steel and our network of dealers provide maintenance and repair service wherever needed
- Though it doesn't happen often - when repairs need to be made, we are here to make sure it is processed correctly
- We equip our service crew with the tools required to complete the task whether it is a bucket truck, welding gun, a lift, or anything else in between
- Our very knowledgeable in-house service crew is often able to come on site to inspect the damage and diagnose the repairs before parts are ordered

Safety Program

- Accu-Steel takes pride in ensuring all staff is safe from any safety hazards
- We have regular safety meetings to discuss dangers in the work place and how to work safely to prevent injuries
- Our safety manager works closely with shop managers and staff to diagnose and remedy safety concerns
- Safety in the workplace is vital to Accu-Steel including severe weather procedures, proper lifting techniques, forklift safety, personal protective equipment, and heat related illness

